

Instrumentation

3 Flutes

2nd dbl. Alto Flute

3rd dbl. Piccolo

2 Oboes

3 Clarinets

Bass Clarinet

Contra Bass Clarinet (B flat)

2 Bassoons

2nd dbl. Contrabassoon

4 Saxophones

Soprano

Alto

Tenor

Baritone

4 Horns

3 Trumpets

2 Trombones

Bass Trombone

Euphonium

Tuba

Double Bass

Piano

Timpani

6 Percussion

Chorus*

Percussion

Perc. 1

Vibes

Perc. 2

Crotales

Orchestra Bells

Marimba

Perc. 3

Chimes

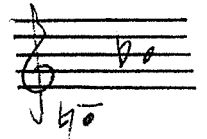
Orchestra Bells

Xylophone

Large Triangle

Snare Drum

2 Tuned Gongs



Perc. 4

Large Suspended

Cymbal

Sleigh Bells

Sizzle Cymbal

Perc. 5

Tam Tam

3 Gongs

Large

Medium Large

Medium

Perc. 6

Inside Piano with

Timpani mallets

Bass Drum

Tom Toms

Small

Medium

Medium Large

**The chorus part is single-line Gregorian chant. It has been conceived as a men's chorus, but can also be performed by women's, mixed, or a children's chorus. If a separate chorus is not used, the chorus part should be sung by all members of the wind ensemble who are not otherwise playing. The chorus part has been written into instrumental parts.*