

Part 1
Euphonium

Flower Crown

for Duet and Piano

Naoya Wada

Rubato ♩ = 72

2

mp

5

mf

9 **A** Allegro con sp. ♩ = 8 - 1. **B**

C

mf

25

29 **D**

mp

33

f

38 **E**

mf

44

mf
rit.

Part 2
Flute

Flower Crown

for Duet and Piano

Naoya Wada

Rubato $\text{♩} = 72$

mp

5 *mf*

9 **A** Allegro con sp. $\text{♩} = 8 - 13$ **B** *mf* *mf*

19 **C** *mp*

24 *mf* *p*

29 **D**

34 *mf* to ♩

39 *mp* *mf*

Part 2
Oboe

Flower Crown

for Duet and Piano

Naoya Wada

Rubato ♩ = 72

mp

mf

9 **A** Allegro con spirito ♩ = 8 - 13 **B**
mf

19 **C**
mp

24
mf p

29 **D**
mf

34
mf to ⊕

39
mp mf

Flower Crown

for Duet and Piano

Naoya Wada

Rubato $\text{♩} = 72$

mp

5 *mf*

9 **A** Allegro con spirito $\text{♩} = 120 - 138$ **B** *mf*

19 **C** *mp*

24 *mf* *mp*

29 **D**

34 *mf* to ⊕

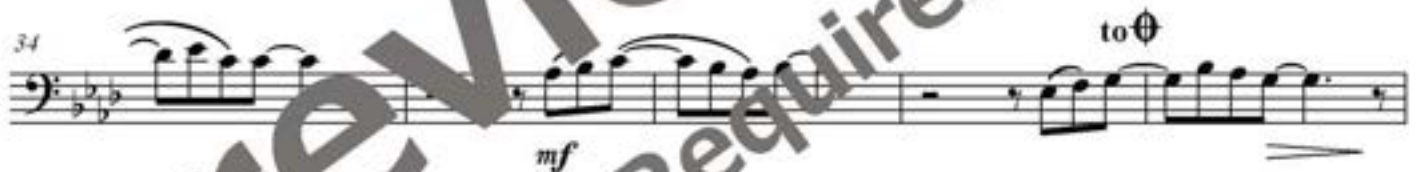
39 *mp* *mf*

Flower Crown

for Duet and Piano

Naoya Wada

Rubato $\text{♩} = 72$



Part 2

B♭ Clarinet / B♭ Soprano Saxophone / B♭ Tenor Saxophone

Flower Crown

for Duet and Piano

Naoya Wada

Rubato ♩ = 72



Part 2

E♭ Alto Saxophone / E♭ Baritone Saxophone

Flower Crown

for Duet and Piano

Naoya Wada

Rubato ♩ = 72

mp

5 *mf*

9 **A** Allegro con sp. ♩ = 128 - 138 *mf* **B** *mf*

19 **C** *mp*

24 *mf* *p*

29 **D** *mf*

34 *mf* to ♯

39 *mp* *mf*